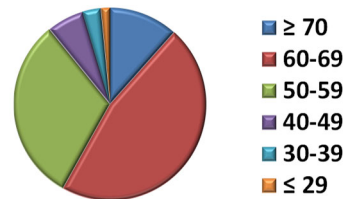


## RACF-L Demographics

At the time of this survey, RACF-L had approximately 1,500 subscribers in one form or another (regular, digest or index), of which about 300 were set to 'no mail'. Excluding the latter, this survey represents roughly 11% of the active RACF-L population.

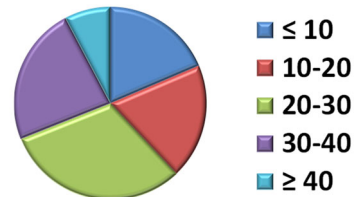
### What is your age group?

Responses	Count	Percent %
70 and above	15	11.6%
60-69	60	46.5%
50-59	40	31.0%
40-49	8	6.2%
30-39	4	3.1%
29 and below	2	1.6%
<b>Total</b>	<b>129</b>	<b>100%</b>



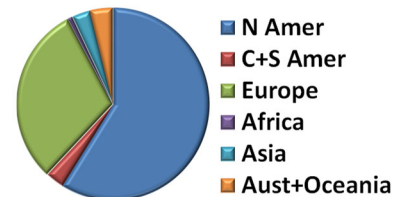
### Approximately how many years of experience do you have working with RACF?

Responses	Count	Percent %
10 years or less	24	18.6%
10-20 years	25	19.4%
20-30 years	40	31.0%
30-40 years	30	23.3%
40 years or more	10	7.7%
<b>Total</b>	<b>129</b>	<b>100%</b>



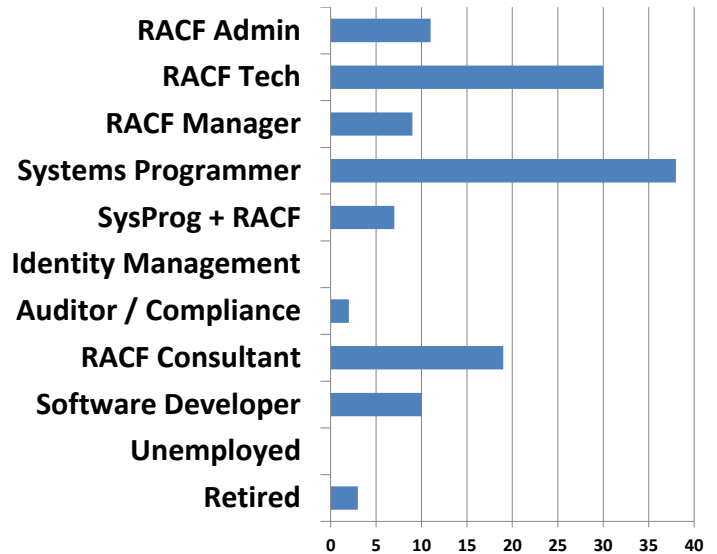
### Where are you located?

Responses	Count	Percent %
North America	76	58.9%
Central or South America	4	3.1%
Europe	39	30.2%
Africa	1	0.8%
Asia	4	3.1%
Australia or Oceania	5	3.9%
<b>Total</b>	<b>129</b>	<b>100%</b>



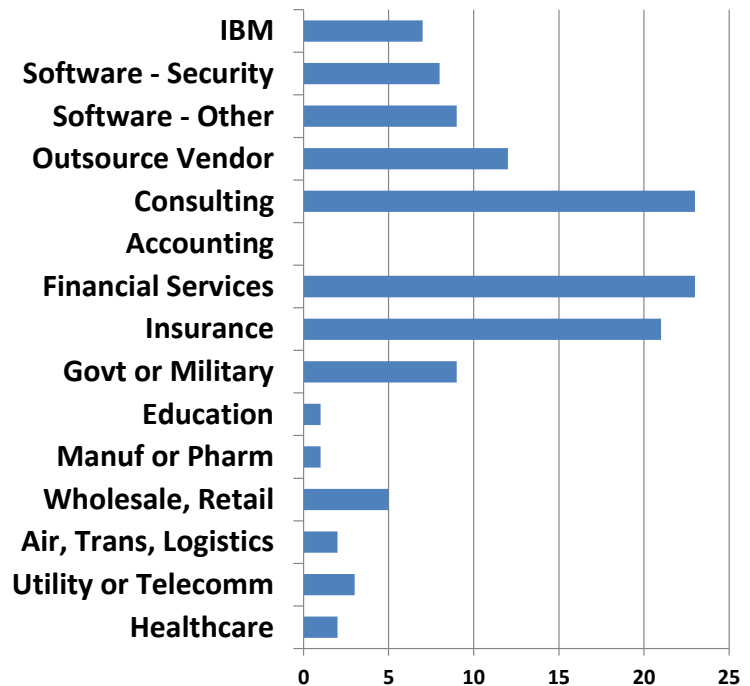
### Which of the following best describes your RACF role and job position?

Responses	Count	Percent %
RACF Administrator (day-to-day processing access requests)	11	8.5%
RACF Technician / Architect (implementation and remediation)	30	23.3%
IT Security / RACF Manager	9	7.0%
Systems Programmer / Technical Support Staff	38	29.5%
Systems Programmer + RACF	7	5.4%
Identity Management / Help Desk	0	0.0%
IT Auditor / Compliance Monitor	2	1.6%
RACF Consultant or Contractor	19	14.7%
Software Developer / Product Support	10	7.8%
Unemployed and seeking work	0	0.0%
Retired	3	2.3%
<b>Total</b>	<b>129</b>	<b>100%</b>



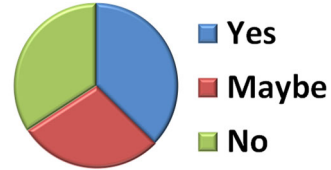
### What type of firm is your direct employer?

Responses	Count	Percent %
IBM	7	5.6%
3rd Party Software Vendor - RACF / Security	8	6.3%
3rd Party Software Vendor - Other	9	7.1%
Security or System Management Service Outsource Vendor	12	9.5%
Consulting, Contracting, Temp	23	18.3%
Accounting or Auditing	0	0.0%
Financial Services	23	18.3%
Insurance	21	16.7%
Government or Military	9	7.1%
Education	1	0.8%
Manufacturing or Pharmaceuticals	1	0.8%
Wholesale, Retail, or e-commerce	5	4.0%
Airline, Transportation, Logistics	2	1.6%
Utility or Telecommunications	3	2.4%
Healthcare	2	1.6%
<b>Total</b>	<b>126</b>	<b>100%</b>



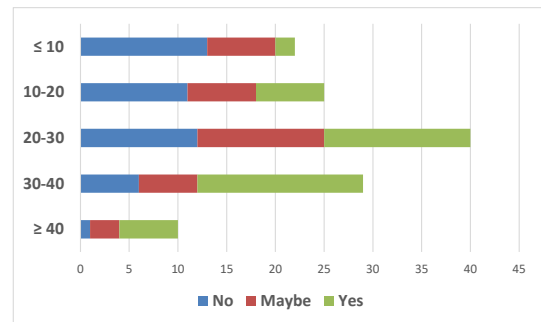
### Are you planning to retire in the next 5 years?

Responses	Count	Percent %
Yes	47	37.3%
Maybe	36	28.6%
No	43	34.1%
<b>Total</b>	<b>126</b>	<b>100%</b>



### RACF experience and retirement plans

Experience / Retirement Plans	No	Maybe	Yes
10 years or less	13	7	2
10-20 years	11	7	7
20-30 years	12	13	15
30-40 years	6	6	17
40 years or more	1	3	6
<b>Responses</b>	<b>43</b>	<b>36</b>	<b>47</b>



### Age group comparison with current and prior year surveys by percentage

Age Group / Survey Year	2012	2017	2022
70 and above	0.7%	6.4%	11.6%
60-69	33.8%	33.7%	46.5%
50-59	41.2%	40.6%	31.0%
40-49	14.2%	9.1%	6.2%
30-39	7.4%	7.5%	3.1%
29 and below	2.9%	2.7%	1.6%
<b>Participants</b>	<b>136</b>	<b>187</b>	<b>129</b>

